

# RESIDENCE E

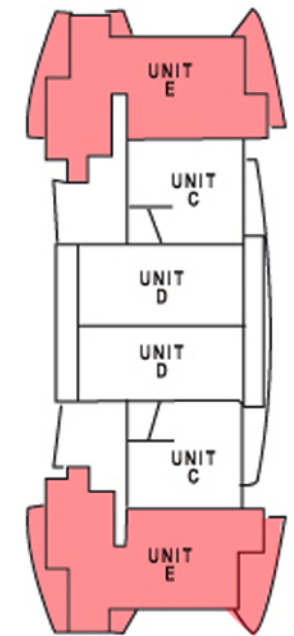
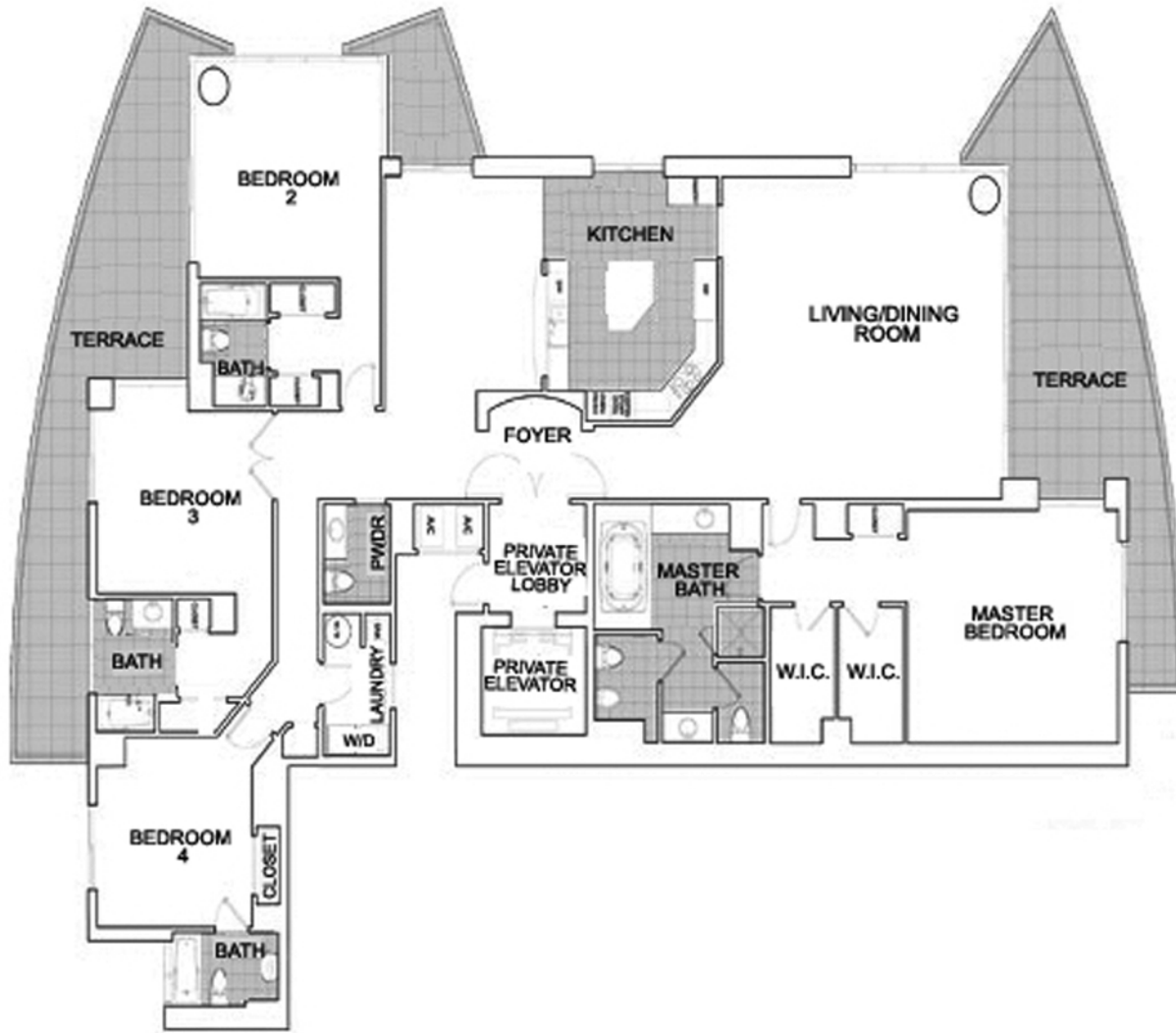
# 4 BEDROOM / 4.5 BATH



Contact:  
**STEVE SAMUELS**  
Email: [ssamuels@condosandcondos.com](mailto:ssamuels@condosandcondos.com)  
Ph: 305.494.1767  
Fax: 888.430.3343  
Web: [www.condosandcondos.com](http://www.condosandcondos.com)



**FLOOR  
PLAN E**  
4,283 sq.ft.



**BISCAYNE BAY**